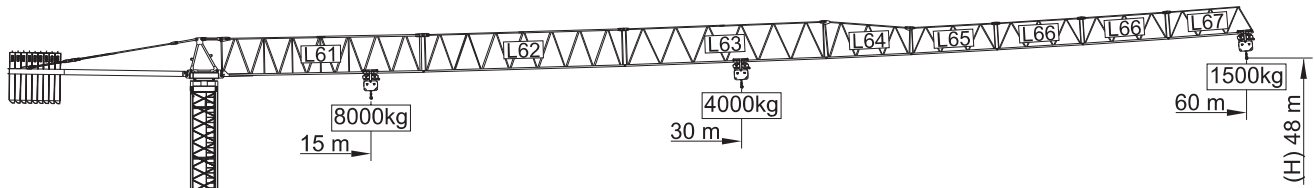
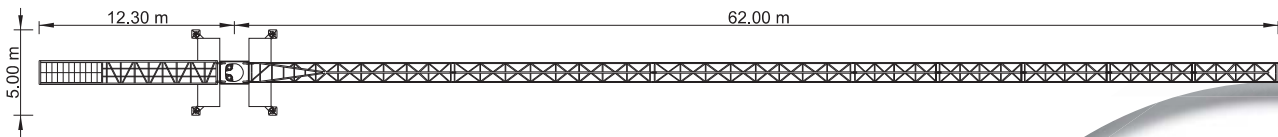
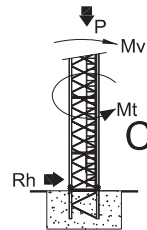
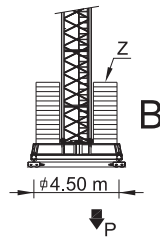
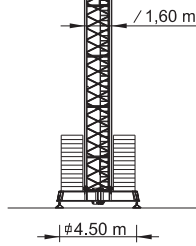


SGT 6015TL



LOADS CARGAS

Counterweight Contrapeso	Jib length Comprimento da lança	Kg / m		m	18	23	28	33	38	40	45	50	55	60
		8000	4000											
18000kg 8x2000kg+2x1000kg	60 m L61+L62+L63+L64+L65+ L66+L66+L67	28,4 m	15,4 m	4000	4000	4000	4000	3350	2810	2640	2270	1970	1730	1500
		15,4 m	17,3 m	6720	5110	4070	3350	2810	2640	2270	1970	1730	1500	
18000kg 8x2000kg+2x1000kg	55 m L61+L62+L63+L64+L65+ L66+L67	32 m	17,3 m	4000	4000	4000	4000	3860	3260	3060	2640	2310	2000	
		17,3 m	17,5 m	7660	5840	4670	3860	3260	3060	2640	2310	2000		
18000kg 7x2000kg+2x1000kg	50 m L61+L62+L63+L64+L65+L67	32,4 m	17,5 m	4000	4000	4000	4000	3910	3300	3100	2680	2300		
		17,5 m	17,3 m	7750	5910	4730	3910	3300	3100	2680	2300			
16000kg 7x2000kg+2x1000kg	45 m L61+L62+L63+L64+L67	32,1 m	17,3 m	4000	4000	4000	4000	3870	3270	3070	2600			
		17,3 m	16,8 m	7680	5860	4690	3870	3270	3070	2600				
14000kg 6x2000kg+2x1000kg	40 m L61+L62+L63+L64	31,2 m	16,8 m	4000	4000	4000	4000	3740	3150	2900				
		16,8 m	17 m	7440	5670	4530	3740	3150	2900					
13000kg 6x2000kg+1x1000kg	38 m L61+L62+L64+L65+L67	31,5 m	17 m	4000	4000	4000	3790	3100						
		17 m	16,4 m	7530	5740	4590	3790	3100						
11000kg 5x2000kg+1x1000kg	33 m L61+L62+L64+L65	30,4 m	16,4 m	4000	4000	4000	3500							
		16,4 m		7230	5500	4400	3500							



REACTIONS REAÇÕES

TABELA DE LASTRO E REACÇÕES MÁXIMAS PARA TODAS AS VERSÕES DE LANÇA						
H m	A / B		C			
	Z kN	P kN	Mv kNm	P kN	Rh kN	Mt kNm
24	500	442	1330	372	30	115
27	500	450	1375	381	34	115
30	500	458	1416	389	38	115
33	600	493	1462	398	42	115
36	600	502	1512	406	45	115
39	700	540	1566	414	49	115
42	700	552	1625	423	53	115
45	800	588	1703	432	57	115
48	900	626	1770	440	61	115

CHARACTERISTICS CARACTERÍSTICAS

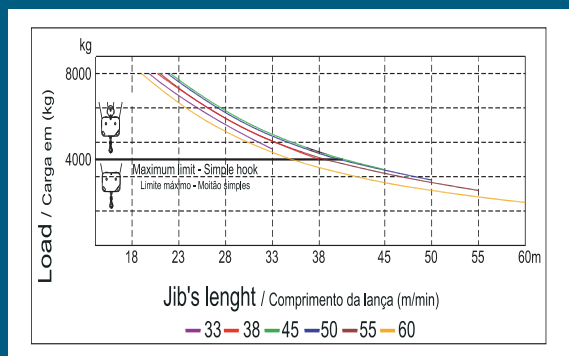
Motions Movimento	Speed Velocidade	Motor's power Pot. dos motores
Hoisting Elevação	0 a 85 m/min.	22 kW
	0 a 42,5 m/min.	
Slewing Orientação	0 a 1 r.p.m.	2x5 daN.m
Trolleying Distribuição	0 a 60 m/min.	5,5 kW
Travelling Translação	15 m/min.	2x3 kW
Electric power Tension / Tensão		Potência total 40 kVA
		400 v ±5% (50 Hz)

* Option / Opção

PARTS ELEMENTOS

		A (mm)	B (mm)	C (mm)	Peso (kg)
Jib section Lança		11850	1310	2900	4280
Jib section Lança		11850	1160	2250	1280
Jib section Lança		11850	1160	2250	1020
Jib section Lança		5110	1160	2250	400
Jib section Lança		5110	1160	1610	330
Jib section Lança		5110	1160	1610	300
Jib section Lança		5130	1160	1610	250
Most section 12m Tramo torre 12m		12000	1620	1620	3450
Most section 6m Tramo torre 6m		6130	1620	1620	1800
Most section 3m Tramo torre 3m		3195	1620	1620	980
Head section Cabeçote		2250	1600	2050	3120
Pyramid Piramide		1650	1320	2030	750
Counter-jib Contra-lança		11400	1500	500	3720
Cross shaped base Chassis		6620	500	1040	1850
Cross shaped base Chassis		3210	340	1040	950
Ballast Contra-peso		1160	165	2950	1000
		1160	330	2950	2000
Foundation tower Tramo de encastrar		1775	1600	1600	650

LOAD DIAGRAM DIAGRAMA DE CARGAS



SPEED DIAGRAM DIAGRAMA DE VELOCIDADE

